



COSMOLINGUA
INSTITUTE OF FOREIGN LANGUAGES

Learn Swahili





COSMOLINGUA PROFILE

Cosmolingua is a leader and the most trusted name in imparting Foreign Language Training, Corporate Language Capsules and range of Multilingual Services. The Institute was registered in 2006 and is empanelled with the Ministry of Defense, Government of India in 2008.

The institute is proudly engaged with imparting education in all major European languages, like French, German, Italian, Spanish, Swedish, Dutch, Portuguese, in various Asian languages such as Chinese, Japanese, Korean, Thai and also in numerous other important languages like Hindi, Arabic, Urdu and many more.

With over 15 years of Experience, Expertise and Excellence, today we are the most trusted global Brand in providing Language Training and Services which assists Individuals, Business, Corporate Giants, NGOs and Government Agencies in achieving their language proficiency goals.

Cosmolingua is a one stop complete language solution!

OUR MISSION

To develop and strengthen the linguistic skill of students, through tailor made modern teaching techniques. We are dedicated towards making our students globally competent and competitive with excellent communication skill.

OUR VISION

To become the leaders in both the national and international markets by rendering quality educational services with respect to time-frames. Moreover, with our responsive service to the public sector, business community as well as private citizens, we aspire to realize the intercultural communication goals.

OUR QUALITY POLICY

We are officially registered under quality certification ISO 9001:2008. We provide the provision for education and training in all Foreign and Indian Languages and related services. Being an expert in our field, we have a proven track record of providing high quality services in the field of Foreign Language Training and Multilingual Solutions.

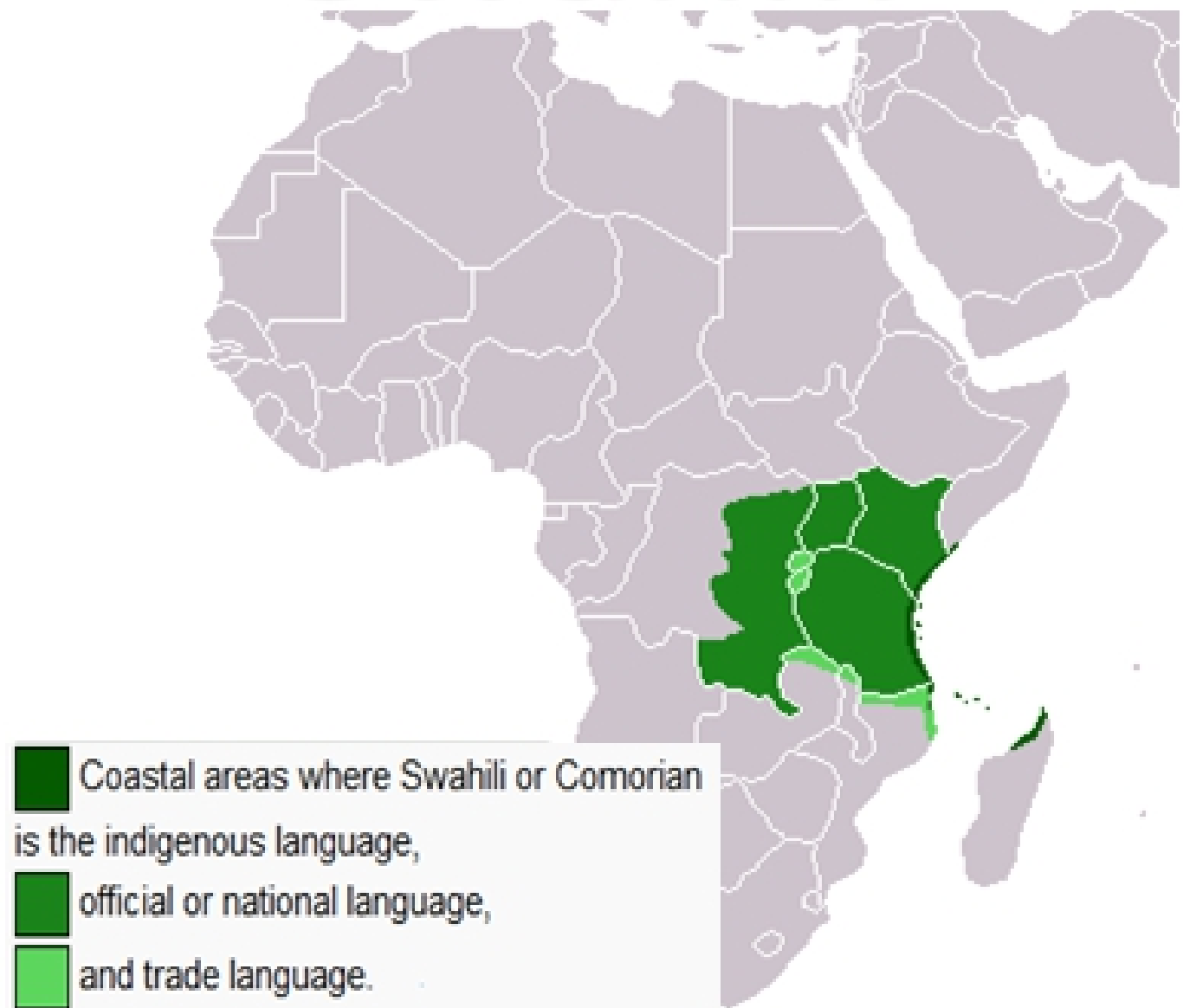
OUR INFRASTRUCTURE

With our Head Office located at Dwarka, New Delhi, we are empowered with state-of-the-art infrastructure. Curriculum, Administrative and Professional Development Services are coordinated from Head Office where our staff and leadership team is located. We work in a strictly academic atmosphere where the students are exposed to state-of the-art classroom facilities. Classes are held in fully air-conditioned classrooms with the aid of audio/visual sessions and the institute is well-equipped with all the pedagogical materials like books, DVD, videos, library etc.

TEACHERS/TRAINERS

Our trainers are very friendly and co-operative who always endeavors to understand the requirement of trainees. They are either native or having domain proficiency in their respective languages, holding Master or Doctorate degree. They are highly qualified and have different styles of teaching catering to varied functional needs thus giving varied and stimulating instructions. Our professional trainers deliver focused training providing the language and linguistic skills that one will require to excel.

Swahili



About Swahili



Swahili, also known by its native name Kiswahili, is the native language of the Swahili people, who are found primarily in Tanzania, Kenya and Mozambique (along the East African coast and adjacent littoral islands).[8] It is a Bantu language, though Swahili has borrowed a number of words from foreign languages, particularly Arabic, but also words from Portuguese, English and German. Around forty percent of Kiunguja(Zanzibar) Swahili vocabulary consists of Arabic loanwords,[9] including the name of the language (سَوَاحِلِي sawā ilī, a plural adjectival form of an Arabic word meaning 'of the coast'). The loanwords date from the era of contact between Arab Traders and the Bantu inhabitants of the east coast of Africa, which was also the time period when Swahili emerged as a lingua franca in the region.[10] The number of Swahili speakers, be they native or second-language speakers, is estimated to be approximately 200 million.[11][12]

Due to concerted efforts by the government of Tanzania, Swahili is one of three official languages (the others being English and French) of the East African Community (EAC) countries, namely Burundi, Democratic Republic of Congo, Kenya, Rwanda, South Sudan, Tanzania, and Uganda. It is a lingua franca of other areas in the African Great Lakes region and East and Southern Africa, including some parts of the Democratic Republic of the Congo (DRC), Malawi, Mozambique, the southern tip of Somalia, and Zambia.[13][14][15] Swahili is also one of the working languages of the African Union and of the Southern African Development Community. The East African Community created an institution called the East African Kiswahili Commission (EACK) which began operations in 2015. The institution currently serves as the leading body for promoting the language in the East African region, as well as for coordinating its development and usage for regional integration and sustainable development.[16] In recent years South Africa,[17] Botswana,[18] Namibia,[19] Ethiopia,[20] and South Sudan[21] have begun offering Swahili as a subject in schools or have developed plans to do so.

Benefits of Learning Swahili

Fund Your Education

Learn About African Cultures

Develop New Friendships

Deepen Your Knowledge of Poetry and Literature

Grow Your Research and Business Opportunities

SWAHILI

OUR COURSES



1. Certificate Diploma & Advance Diploma Courses
2. Short Duration Courses
3. Translation & Interpreter ship Courses
4. Exam preparatory courses
5. Corporate Language Training
6. Courses For Military and Diplomatic Attaché
7. Teachers Training in Foreign Languages
8. One year Job oriented Diploma Courses
9. BA , MA , PHD in Foreign languages
10. Courses for School Going Children.

TEACHING METHODOLOGY



The languages are taught through a pragmatic, proven and communicative approach. We address each student's individual need. Our methodology focuses on:

1. Intensive coaching in grammar, sentence structure and vocabulary
2. Reading and listening comprehension and written exercises
3. Maximum spoken communication
4. Expressing with accuracy without losing fluency
5. Role plays practice in relevant social situations
6. Developing independent learning skills and strategies for better communication

EXAMINATION



At the end of each level, students' progress will be regularly monitored and examined. After every level, an exam will be conducted to check the student's level of comprehension. At the end of the course, the student's knowledge is again tested through a final written exam and also a viva voce Examinations will be held at the institute itself.

EXAM WE PREPARE

We prepare the students for the Following International Exam which is either conducted by the embassies or Cultural centers which helps in immigration purposes. Following Exams we prepare:

SWAHILI



CERTIFICATES

On successful completion of the course, a certificate from Cosmolingua will be awarded which will clearly specify that you have completed the particular course from the institute for specified duration.



Enrolment No.:

Cosmolingua®
EDU SERVICES PVT. LTD

*Cosmolingua Institute of Foreign Languages
New Delhi*

Certificate

LANGUAGE LEVEL - A1

*We certify that _____ has successfully completed
Basic Level of _____ Language Course and passed exams equivalent
to Level - A1 as per the Common European Framework of Reference for Languages
(CEFR) held in _____ at Cosmolingua Institute of Foreign Languages.*

Director

Course Co-ordinator

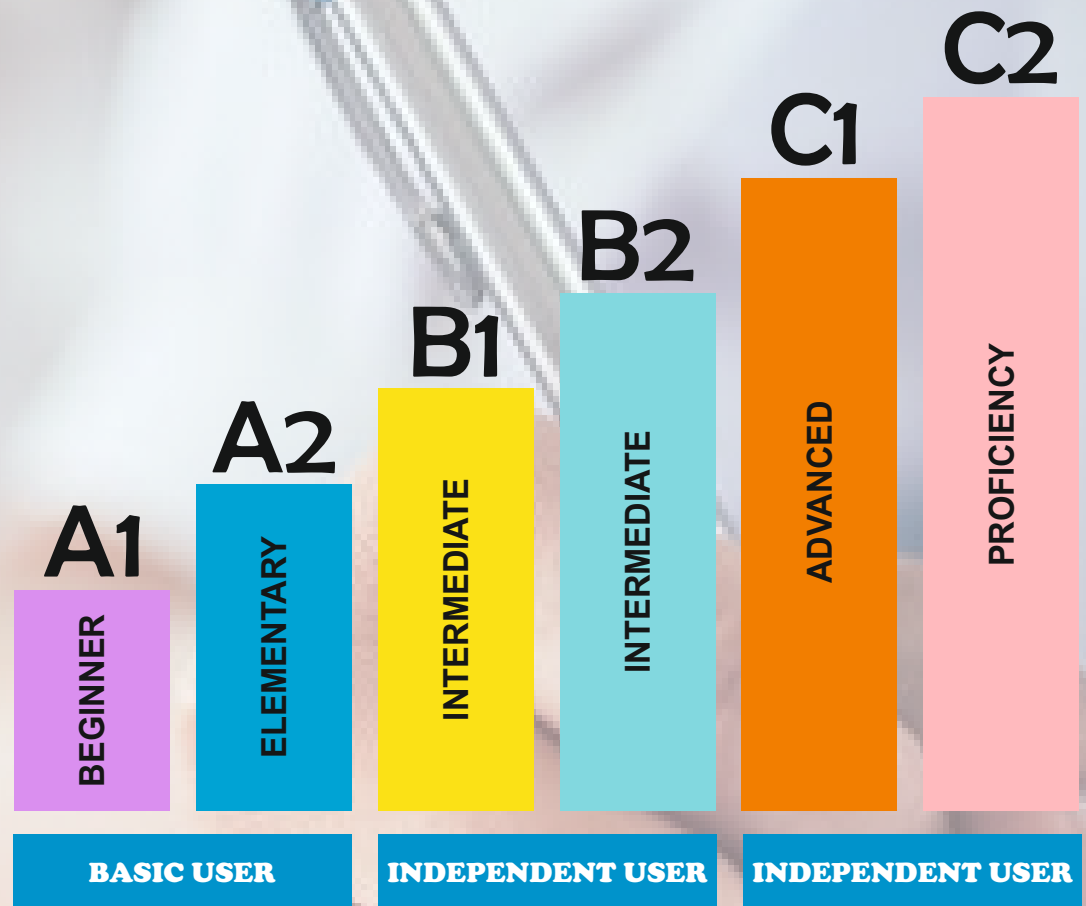
**Date of Issue:-
Place: New Delhi**

OTHER SERVICES

- Corporate Language Training
- Language Proficiency Test
- Translation & Interpretation
- Educational Consultancy Services
- Multilingual Data Collection
- Hr Services



CEFR PROFICIENCY LEVEL



LEVEL A1

Spoken interaction	You can interact in a simple way provided the other person is prepared to repeat or rephrase things at a slower rate of speech and help me formulate what you are trying to say. You can ask and answer simple questions in areas of immediate need or on very familiar topics.
Spoken production	You can use simple phrases and sentences to describe where you live and people you know.
Listening	You can recognise familiar words and very basic phrases concerning yourself, your family and immediate concrete surroundings when people speak slowly and clearly.
Writing	You can write a short, simple postcard, for example sending holiday greetings. You can fill in forms with personal details, for example entering my name, nationality and address on a hotel registration form.
Reading	You can understand familiar names, words and very simple sentences, for example notices and posters or in catalogues.

1. For Level A1 Duration 40 Hours

Rs 30,000/- per student per level (For Online Rs 22,500/) GST: 18%

LEVEL A2

Spoken interaction	<p>You can communicate in simple and routine tasks requiring a simple and direct exchange of information on familiar topics and activities.</p> <p>You can handle very short social exchanges, even though I can't usually understand enough to keep the conversation going yourself.</p>
Spoken production	<p>You can use a series of phrases and sentences to describe in simple terms your family and other people, living conditions, your educational background and your present or most recent job.</p>
Listening	<p>You can understand phrases and the highest frequency vocabulary related to areas of most immediate personal relevance (e.g. very basic personal and family information, shopping, local area, employment). You can catch the main point in short, clear, simple messages and announcements.</p>
Writing	<p>You can write short, simple notes and messages relating to matters in areas of immediate needs. You can write a very simple personal letter, for example thanking someone for something.</p>
Reading	<p>You can read very short, simple texts. You can find specific, predictable information in simple everyday material such as advertisements, prospectuses, menus and timetables and you can understand short simple personal letters.</p>

1. For Level A2 Duration 40 Hours

Rs 35,000/- per student per level(For Online Rs 25,500/) GST: 18%



LEVEL B1

Spoken interaction

You can deal with most situations likely to arise whilst travelling in an area where the language is spoken. You can enter unprepared into conversation on topics that are familiar, of personal interest or pertinent to everyday life (e.g. family, hobbies, work, travel and current events).

Spoken production

You can connect phrases in a simple way in order to describe experiences and events, your dreams, hopes and ambitions. You can briefly give reasons and explanations for opinions and plans. You can narrate a story or relate the plot of a book or film and describe your reactions.

Listening

You can understand the main points of clear standard speech on familiar matters regularly encountered in work, school, leisure, etc.

Writing

You can understand the main point of many radio or TV programmes on current affairs or topics of personal or professional interest when the delivery is relatively slow and clear.

Reading

You can write simple connected text on topics which are familiar or of personal interest. You can write personal letters describing experiences and impressions. You can understand texts that consist mainly of high frequency every day or job-related language. You can understand the description of events, feelings and wishes in personal letters.

1. For Level B1 Duration 40 Hours

Rs 40,000/- per student per level(5r Online Rs 30,500/) GST: 18%

LEVEL B2

Spoken interaction

You can interact with a degree of fluency and spontaneity that makes regular interaction with native speakers quite possible. You can take an active part in discussion in familiar contexts, accounting for and sustaining your views.

Spoken production

You can present clear, detailed descriptions on a wide range of subjects related to your field of interest. You can explain a viewpoint on a topical issue giving the advantages and disadvantages of various options.

Listening

You can understand extended speech and lectures and follow even complex lines of argument provided the topic is reasonably familiar.

You can understand most TV news and current affairs programmes. You can understand the majority of films in standard dialect.

Writing

You can write clear, detailed text on a wide range of subjects related to my interests. You can write an essay or report, passing on information or giving reasons in support of or against a particular point of view. You can write letters highlighting the personal significance of events and experiences.

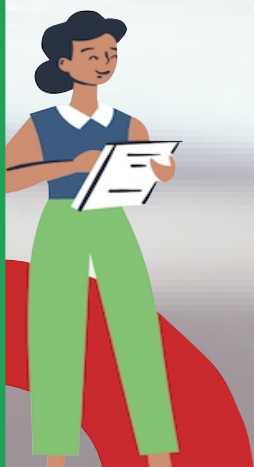
Reading

You can read articles and reports concerned with contemporary problems in which the writers adopt particular attitudes or viewpoints.

You can understand contemporary literary prose.

1. For Level B2 Duration 40 Hours

Rs 45,000/- per student per level(5r Online Rs 35,500/) GST: 18%



LEVEL C1

C

You can express yourself fluently and spontaneously without much obvious searching for expressions. You can use language flexibly and effectively for social and professional purposes. You can formulate ideas and opinions with precision and relate your contribution skilfully to those of other speakers.

Spoken production

You can present clear, detailed descriptions of complex subjects integrating sub themes, developing particular points and rounding off with an appropriate conclusion.

Listening

You can understand extended speech even when it is not clearly structured and when relationships are only implied and not signalled explicitly.

You can understand television programmes and films without too much effort.

Writing

You can express yourself in clear, well-structured text, expressing points of view at some length. You can write about complex subjects in a letter, an essay or a report, underlining what you consider to be the salient issues. You can select style appropriate to the reader in mind.

Reading

You can understand long and complex factual and literary texts, appreciating distinctions of style. You can understand specialised articles and longer technical instructions, even when they do not relate to your field.

1. For Level C1 Duration 40 Hours

Rs 47,500/- per student per level(5r Online Rs 37,500/) GST: 18%

LEVEL C2

Spoken interaction

You can take part effortlessly in any conversation or discussion and have a good familiarity with idiomatic expressions and colloquialisms.

You can express yourself fluently and convey finer shades of meaning precisely.

If you do have a problem you can backtrack and restructure around the difficulty so smoothly that other people are hardly aware of it.

Spoken production

You can present a clear, smoothly-flowing description or argument in a style appropriate to the context and with an effective logical structure which helps the recipient to notice and remember significant points.

Listening

You have no difficulty in understanding any kind of spoken language, whether live or broadcast, even when delivered at fast native speed, provided. You have some time to get familiar with the accent.

Writing

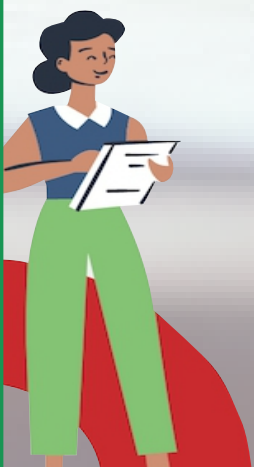
You can write clear, smoothly-flowing text in an appropriate style. You can write complex letters, reports or articles which present a case with an effective logical structure which helps the recipient to notice and remember significant points. You can write summaries and reviews of professional or literary works.

Reading

You can read with ease virtually all forms of the written language, including abstract, structurally or linguistically complex texts such as manuals, specialised articles and literary works.

1. For Level C2 Duration 40 Hours

Rs 50,000/- per student per level(For Online Rs 40,500/) GST: 18%



JOB OPPORTUNITIES

**Teaching
Translator
Interpreter
BPO
Tourism
Foreign Services**



OUR TRUSTED CLIENTS

Top Government Agencies as well as National and international companies have continuously reposed Trust in our Training Program me since 2006.



Thank you

**Enhance your Communication Skills
Move beyond Anglophone world
Excel yourself globally**



Learn Languages :

French
Chinese
Arabic
Burmese
Japanese
Swahili
Persian
Portuguese
German
Spanish
Thai
Russian
Polish
Hungarian
Italian
Sinhala
Turkish
Armenian
Dutch
Swedish
Latin
Korean
Pashto
Indonesian
Vietnamese
Greek
Albanian
Nordic
Hebrew
Dari
Divehi
Urdu
& Many More



info@cosmolingua.in



011-45452324, 45452326



9999910063



Cosmolinguaa@gmail.com



105, Block A, Sector 8 Dwarka, Dwarka, Delhi, 110077